

OFIOLITI 46, 2 (2021)  
Compagnoni et al., Supplementary Figures

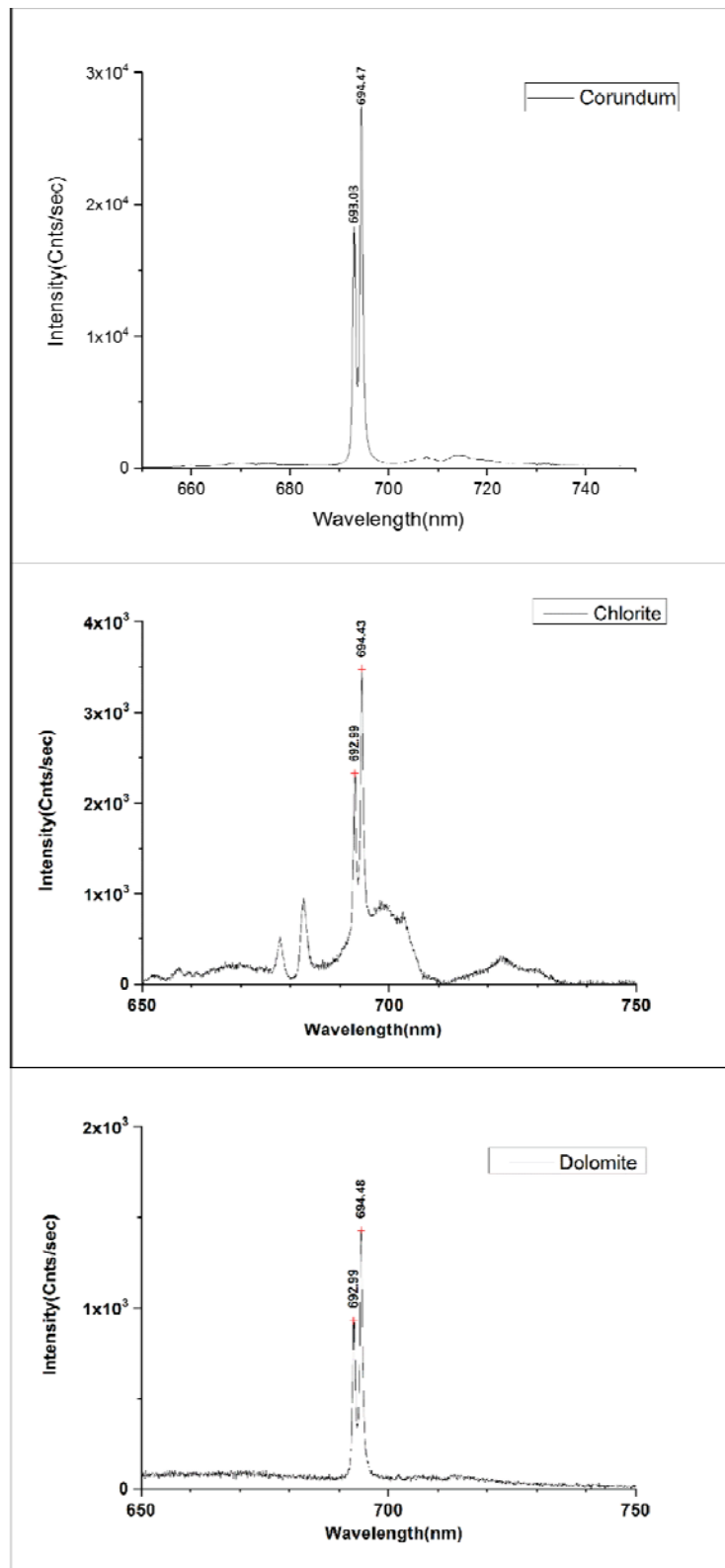


Fig. S1 - Luminescence spectra of corundum, chlorite and dolomite with the doublet R1 (694.473 nm) and R2 (693.029 nm) indicating the presence of chromium.



Fig. S2 - Enlarged photograph of the upper surface, roughly parallel to rock foliation, of the chloritite sample (cf. Fig. 2), which shows knots of vein corundum, characterized by blue and pink colours.

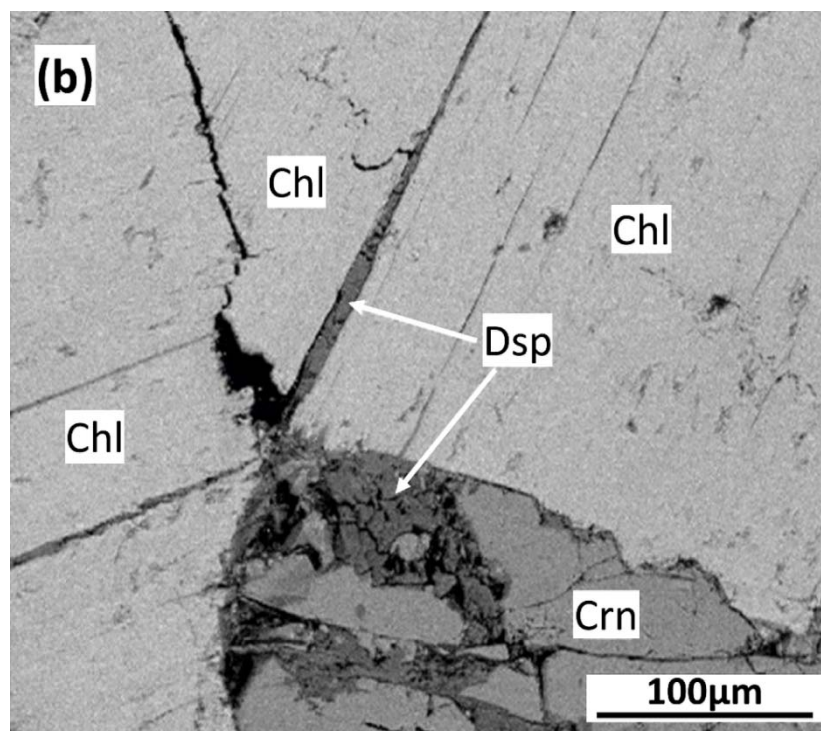
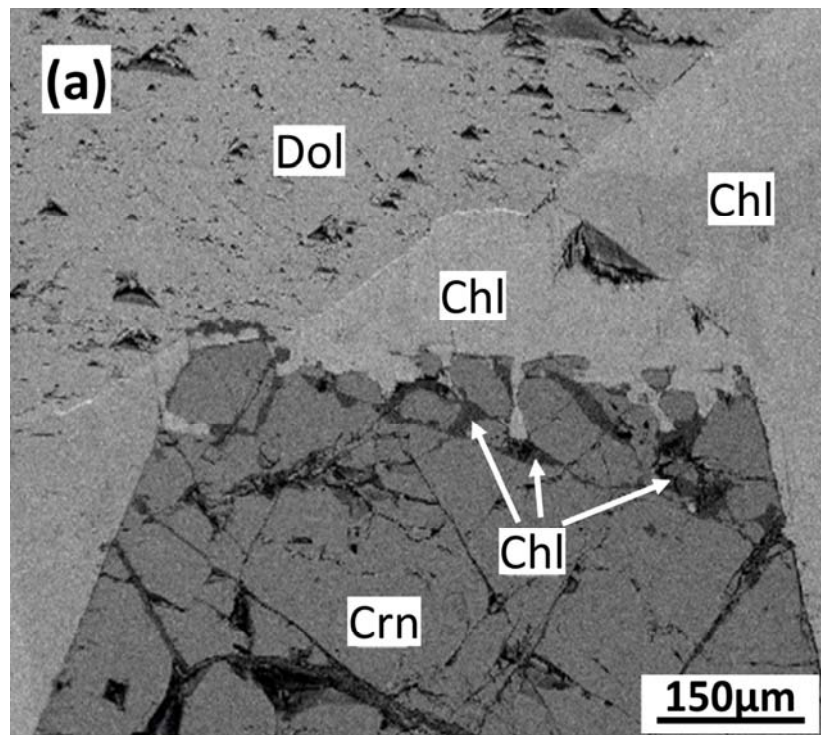


Fig. S3 - a) Photomicrograph of a euhedral corundum crystal partly replaced by chlorite (Chl) and later diaspore (Dsp). b). Photomicrograph of a euhedral corundum altered to diaspore (Dsp), which also penetrates along the chlorite cleavage planes